

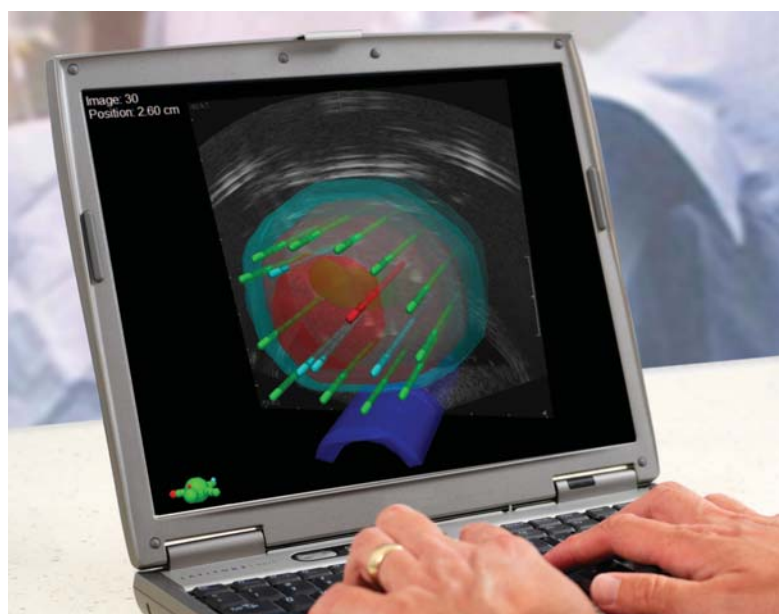
Vitesse 2.5 Real-time planning for HDR prostate brachytherapy

Further reduce time to first fraction*

Vitesse™ real-time planning for HDR brachytherapy allows 3D HDR prostate brachytherapy to be performed accurately and quickly without the need for CT. The features of Vitesse 2.5 enable the user to further reduce the time to first fraction.*

New features

- Improved image quality and workflow through direct network transfer of live ultrasound video**
- New features allow you to plan with greater confidence, speed, and ease. Highlights include:
 - Defining angled and curved needles on the real-time ultrasound with as few as two clicks
 - Using the 3D View to quickly assess needle and dwell positions relative to defined patient anatomy and captured image data
 - Automatically filling needles with dwell positions based on needle intersection with the target structure
 - Ensure needles are inserted far enough for good prostate base coverage with the “go/no go” indicator
- Improve workflow with enhanced contouring tools
- Support more implant techniques with enhanced automatic needle placement



Optimized needle planning and insertion

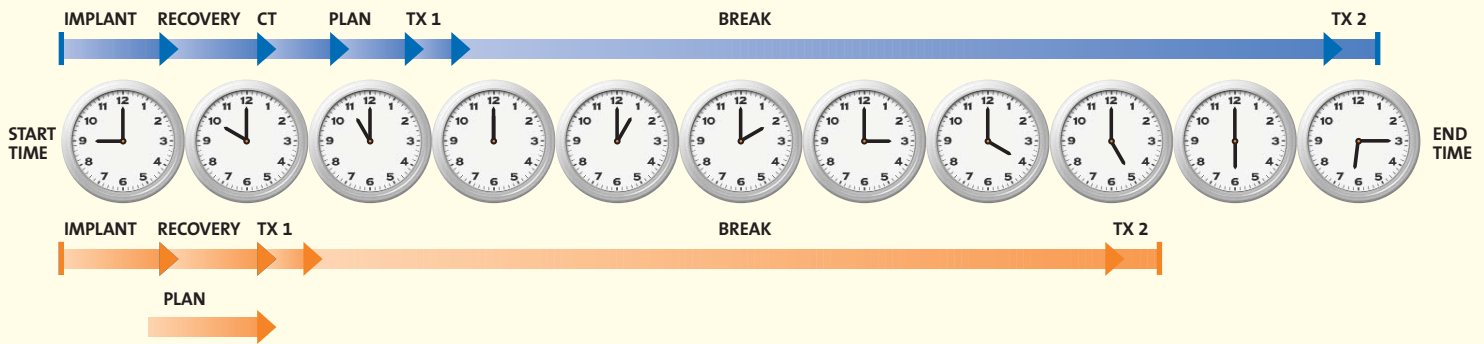
With the enhanced contouring tools of Vitesse 2.5, quickly generate target and critical structures, effortlessly add margins as required, and then easily review in the 3D view. With contouring complete, Vitesse can assist you in determining needle placement using a strategy that suits your practice.

During the process of needle placement, Vitesse allows you to freely move, tilt, and bend the planned needle positions to match those implanted. With the needles in place, readily visualized dwell positions are automatically entered to further speed up the process. Through the aid of the “go/no go” display indicating adequate target coverage, you can immediately see when the needle is not sufficiently implanted for good coverage.

With all needles inserted, you can quickly capture the volume, check the final needle paths, and readily make any necessary needle adjustments.

Finally, the advanced planning and evaluation tools of the BrachyVision™ brachytherapy treatment planning system allow you to smoothly develop an optimized plan ready for delivery.

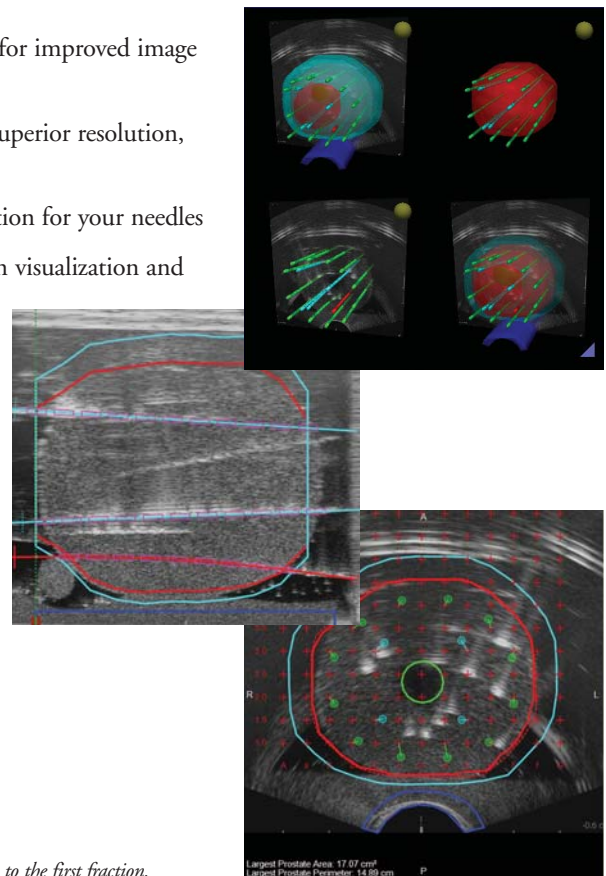
Ultrasound-based needle planning and insertion



Vitesse and BrachyVision create treatment plans during patient recovery and eliminate the need for CT scans. Fewer patient moves reduce the probability of gaps in the timeline for equipment, transport, or personnel availability.

Why choose Vitesse?

- Digital ultrasound video transfer via direct Ethernet connection** for improved image quality, reliability, and workflow
- Automatic transverse or longitudinal image capture*** for speed, superior resolution, and reduced prostate distortion
- Automatic needle placement tools to quickly plan the correct position for your needles
- Real-time guidance on needle positioning, including dwell position visualization and coverage indicators
- Move, tilt, and bend the needle on the live image giving accurate reconstruction for planning with ease
- Needle path image reconstruction for checking and adjusting needle paths if required
- View structures and needle positions easily using the new 3D workspace that stores patient orientation and visualization settings
- Simplified planning during patient recovery using the advanced optimization, planning, and evaluation tools of BrachyVision
- Deliver the first fraction minutes after implant
- Implant one patient at the same time as generating the plan for another patient



* With the new features of Vitesse 2.5, users of Vitesse 2.0 will find they save even more time to the first fraction.

** BK ProFocus and FlexFocus, with sufficient license from BK Medical

*** Twister license required for longitudinal image capture.

Varian and Varian Medical Systems are registered trademarks, and BrachyVision and Vitesse are trademarks of Varian Medical Systems, Inc. All other trademarks are the property of their respective owners.



BrachyTherapy Offices USA
 Varian Medical Systems
 BrachyTherapy Head Office
 Charlottesville, VA
 Tel: 888.666.7847
 Fax: 434.244.7181
 www.varian.com

BrachyTherapy Offices Europe
 Varian Medical Systems
 BrachyTherapy
 Haan, Germany
 Tel: 49.2129.551.0
 Fax: 49.2129.551.55